

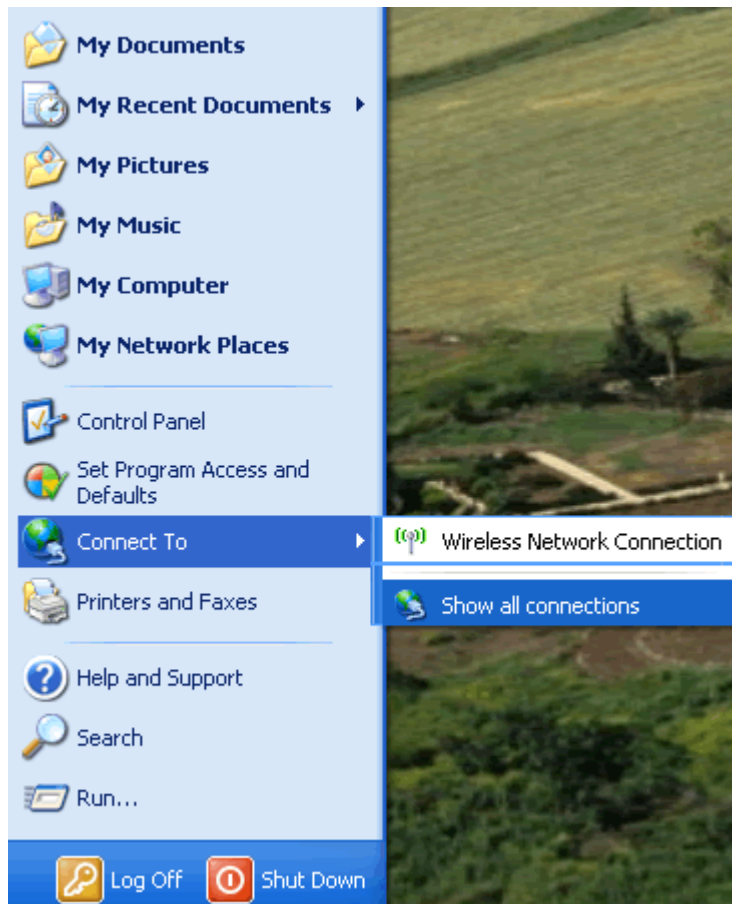
User Instructions for Windows XP

The buildings with wireless on campus are:

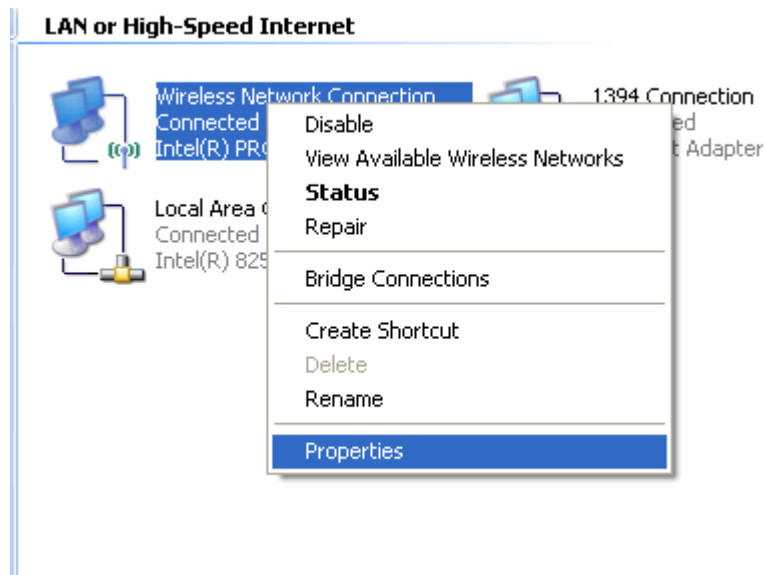
- Lindner Tower, 1st, 5th, 6th and 7th Floors
- Ohio Hall
- Wilson Hall
- Volkman Hall
- Creekside South
- Fitness Center
- Administration Building
- Barton House
- HAWAC
- Browne Library

In order to standardize this process, regardless of the specific wireless interface on your computer, you may use the Windows XP wireless utility to configure your wireless network access. Follow the steps shown below:

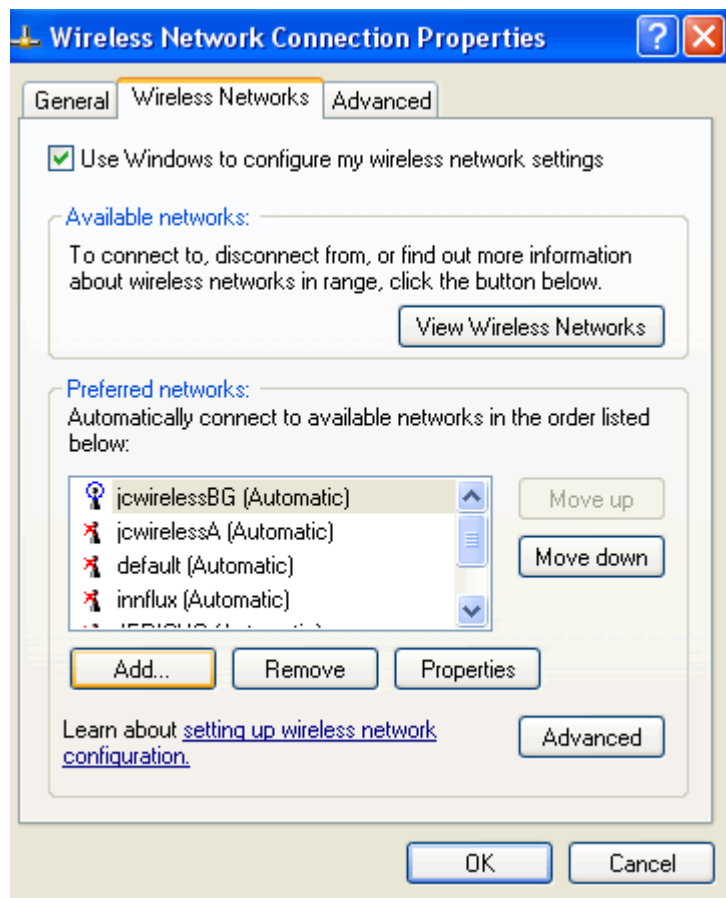
Go to the Start Menu and Select Connect to and choose the Show all connections option



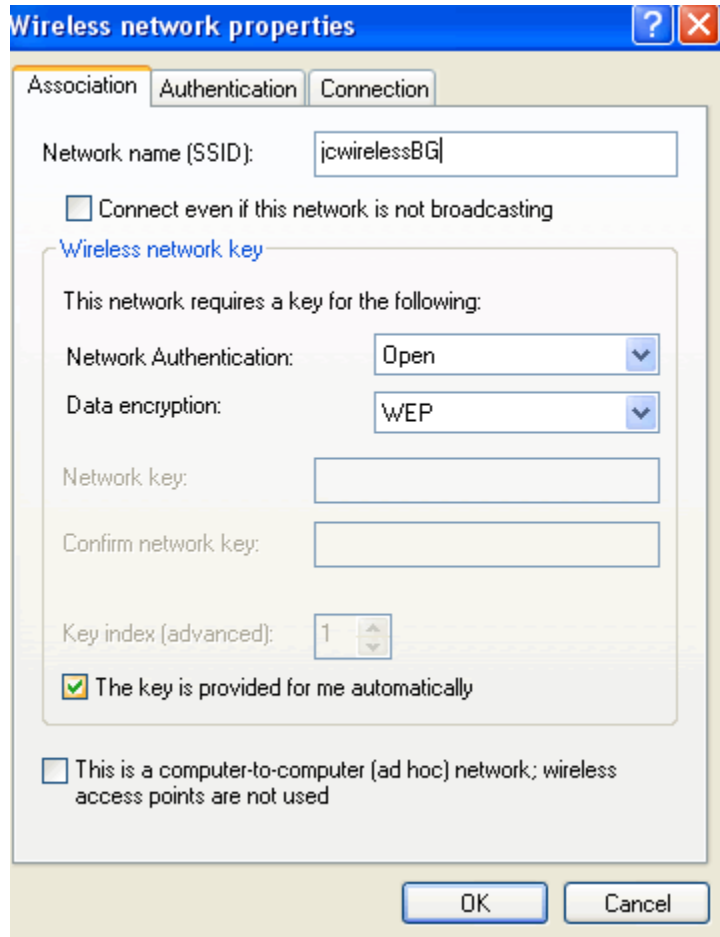
Next, right click the Wireless Connection icon and select Properties.



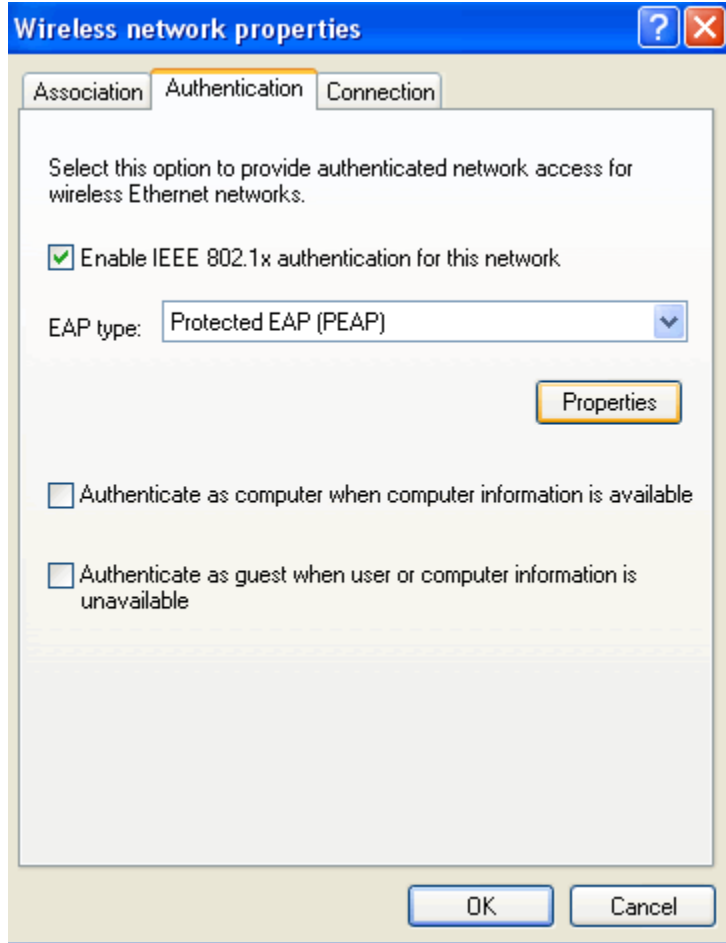
On the next screen select the Wireless Networks Tab and click the Add button.



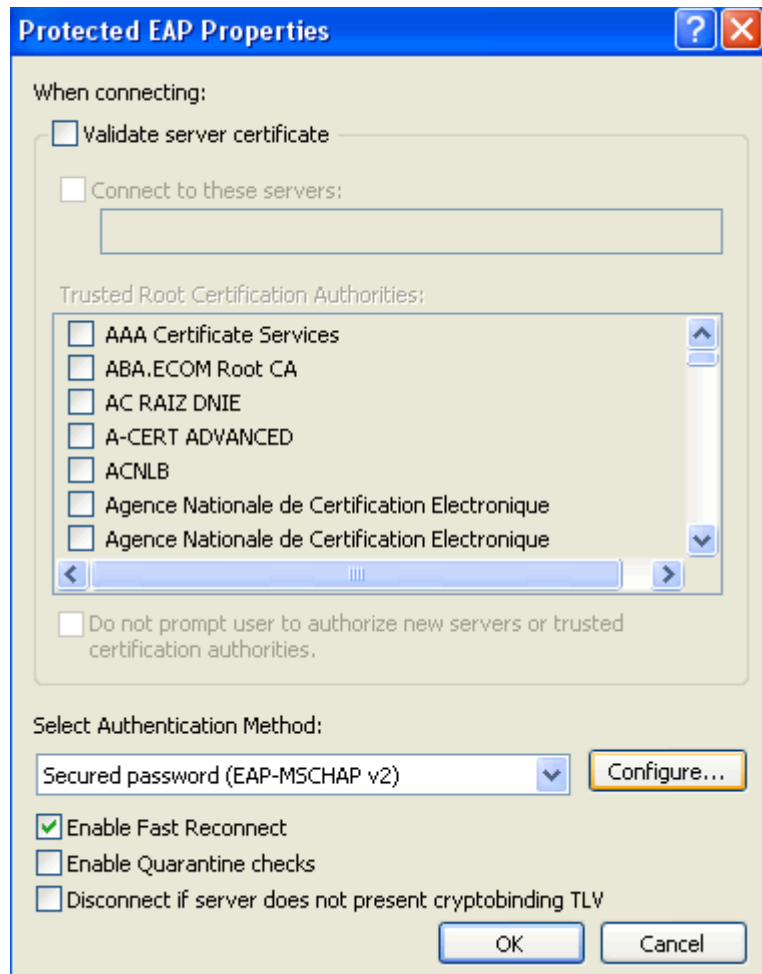
Next, type jewirelessBG (case sensitive) in the Network Name (SSID) field. Make sure your screen looks identical to the one below and select the Authentication tab at the top.



Make sure your box is identical to the one below and click the Properties tab.



On the next screen, make sure you uncheck the Validate Server Certificate and check the Enable Fast Reconnect tab. Then click the Configure button.



Next, make sure you uncheck the box below and click OK. Click *OK* on all windows until you have returned to the *Network Connections*. Close that window.



Wait for a few seconds and you will be prompted for your ID and Password. Click the center of this box.



Then enter your username and password and click OK. (You don't need to put anything in the Logon domain field).

