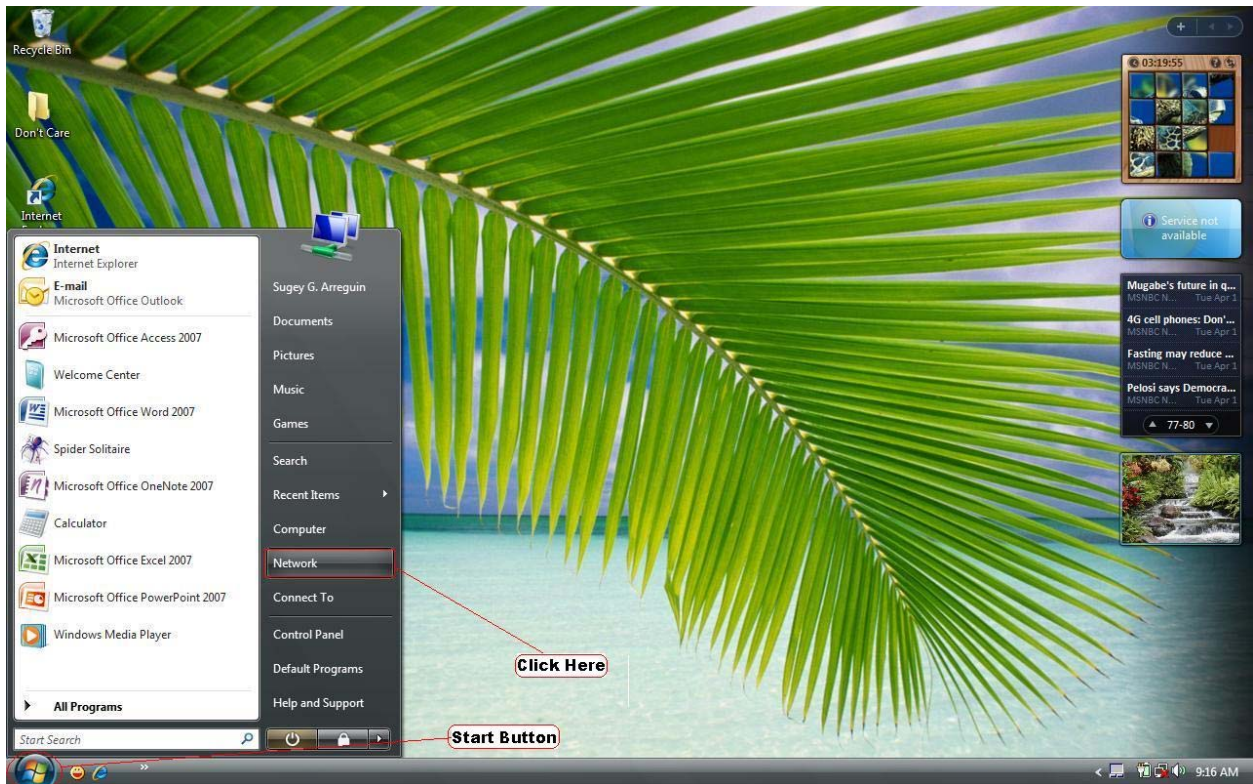
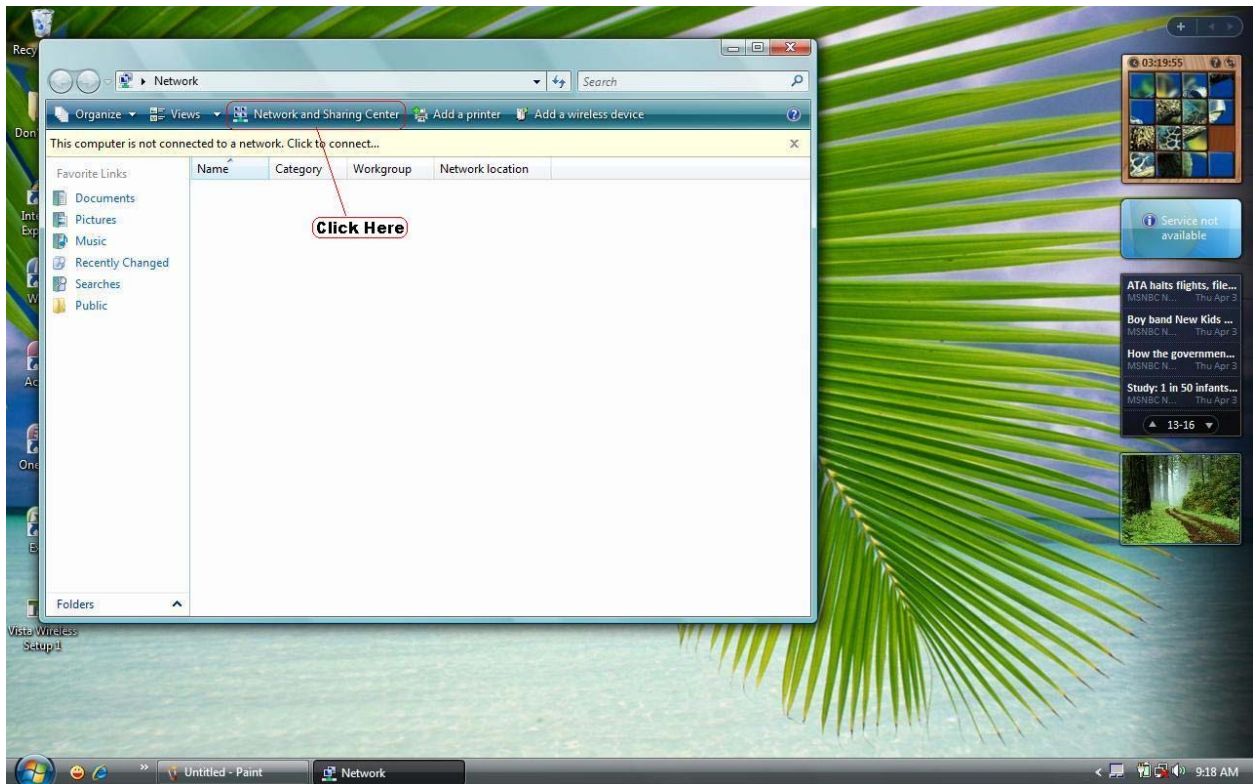


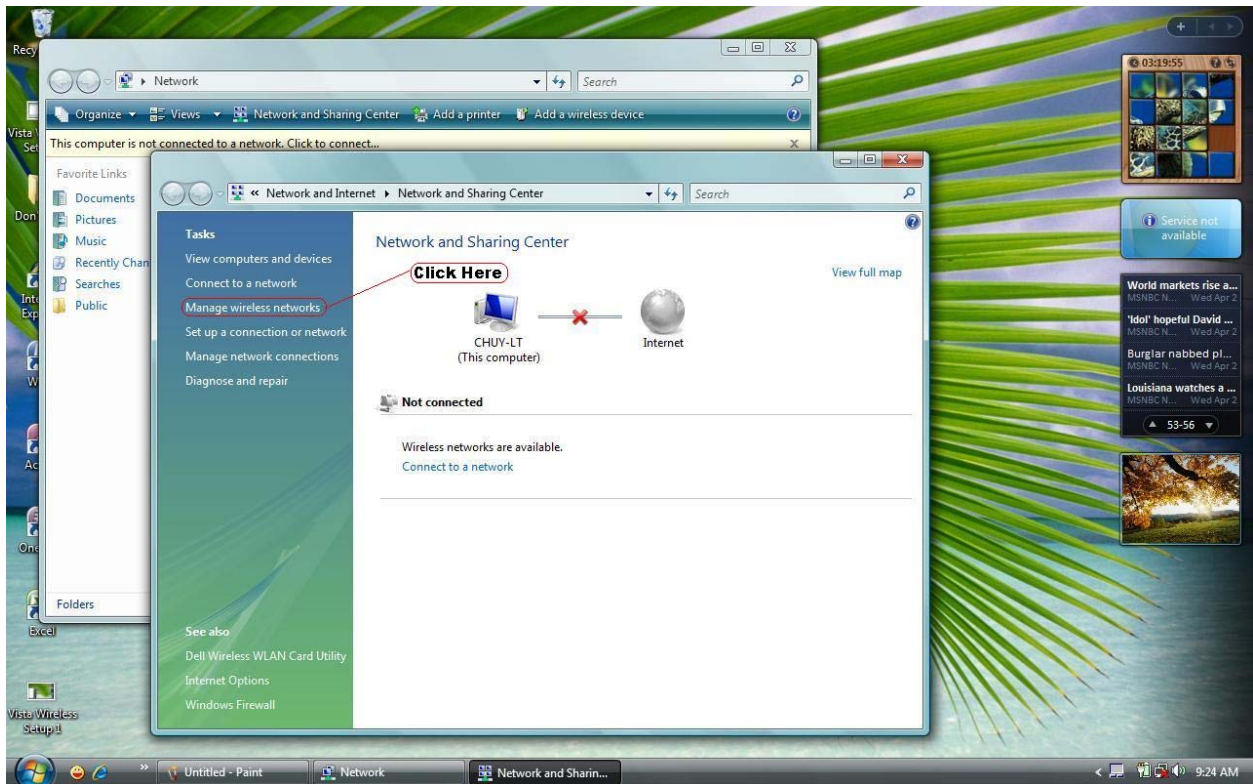
Step 1. Click the start button and select the Network Option as shown in the screen shot below



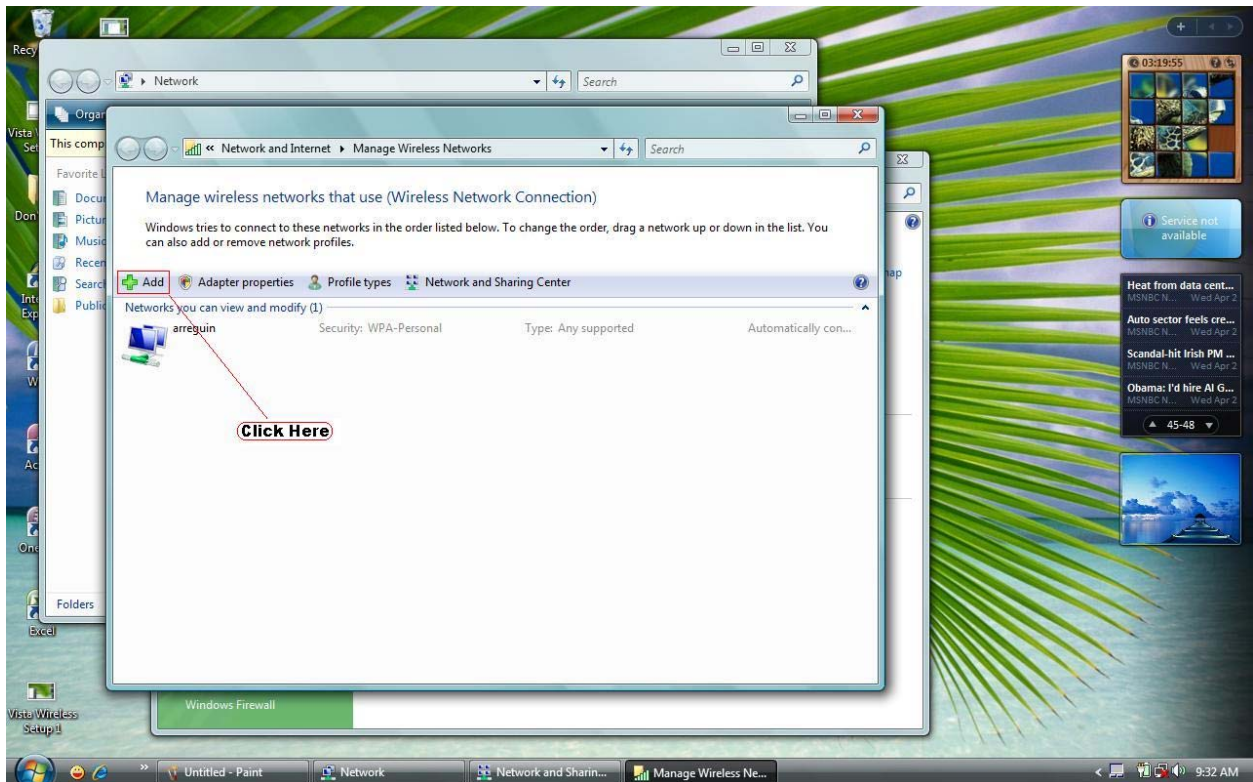
Step 2. Click the Network and Sharing Center tab.



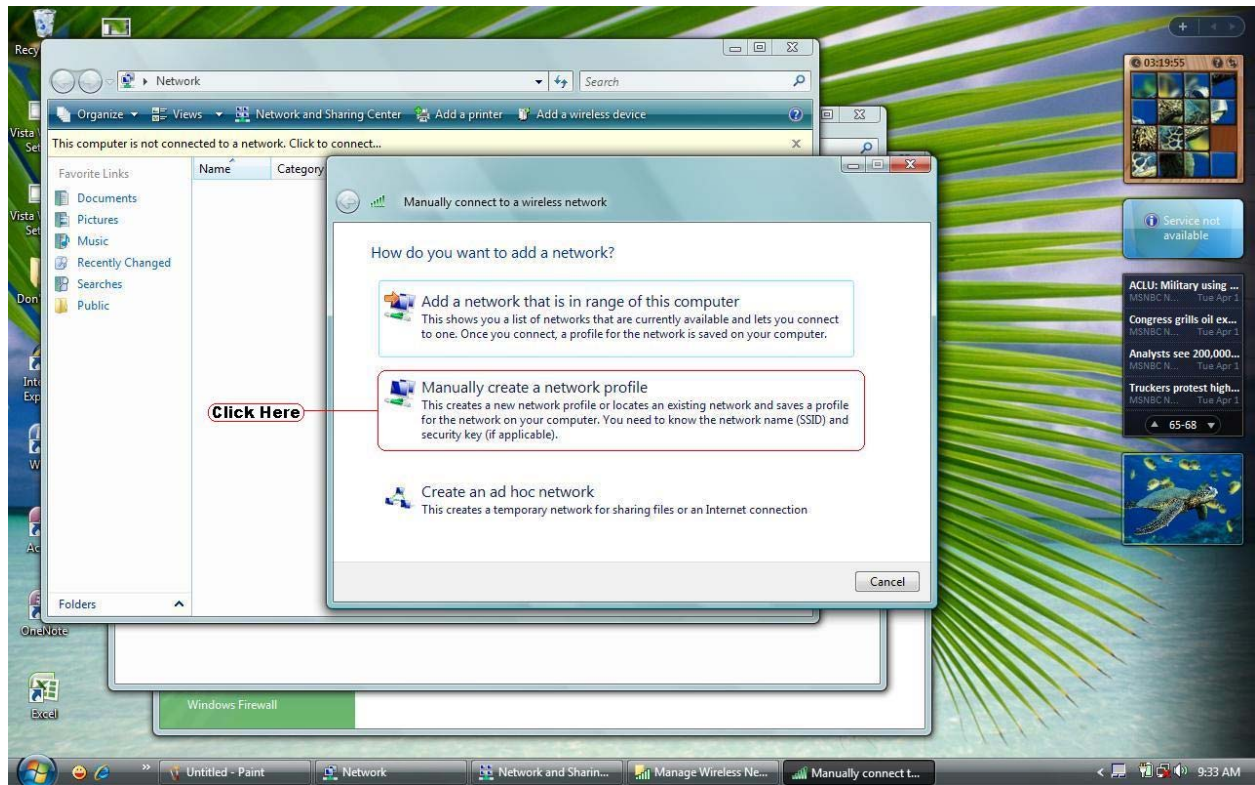
Step3. Click the Manage Wireless Link at the left.



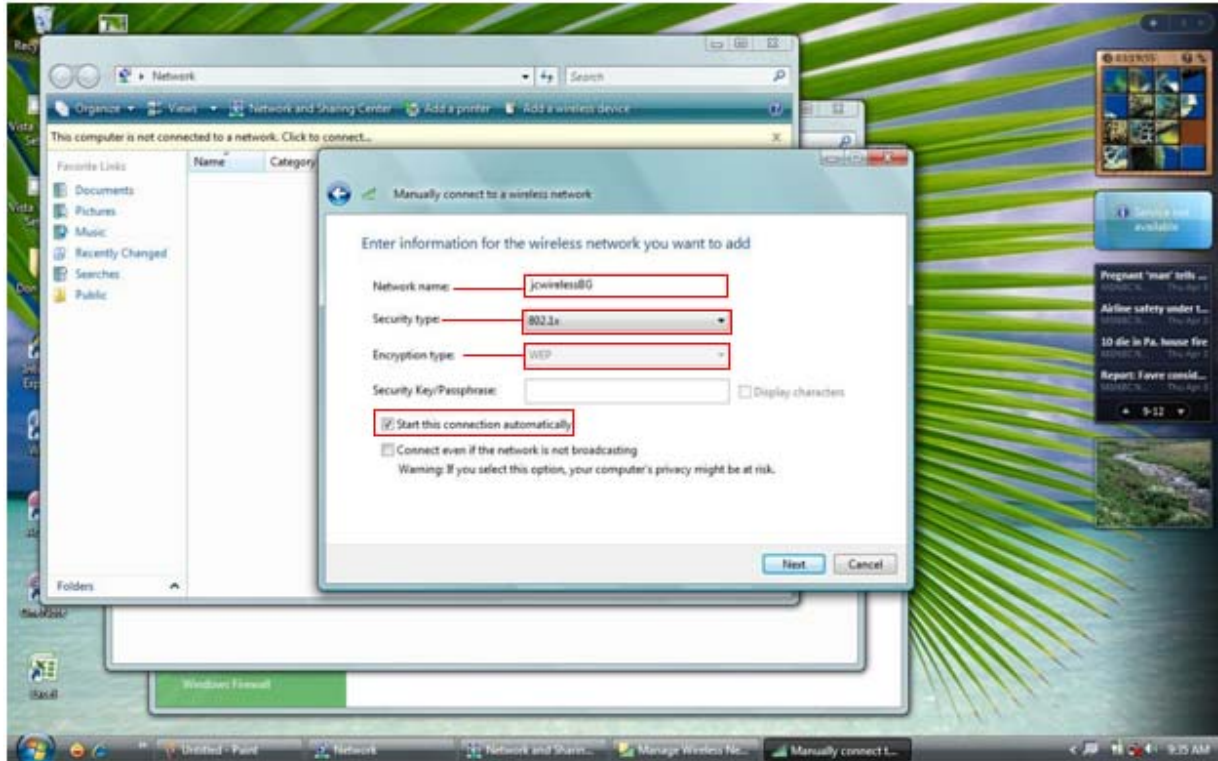
Step 4. Click the Add button.



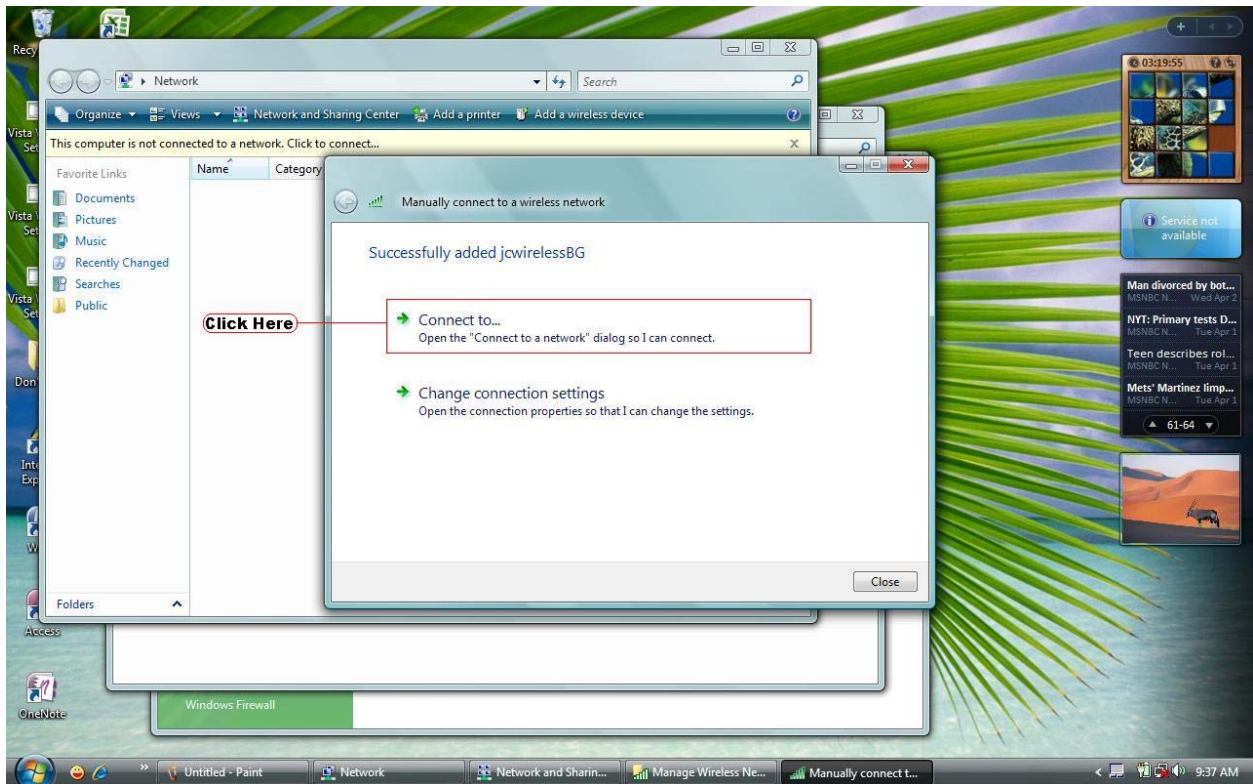
Step 5. Click Manually create a profile.



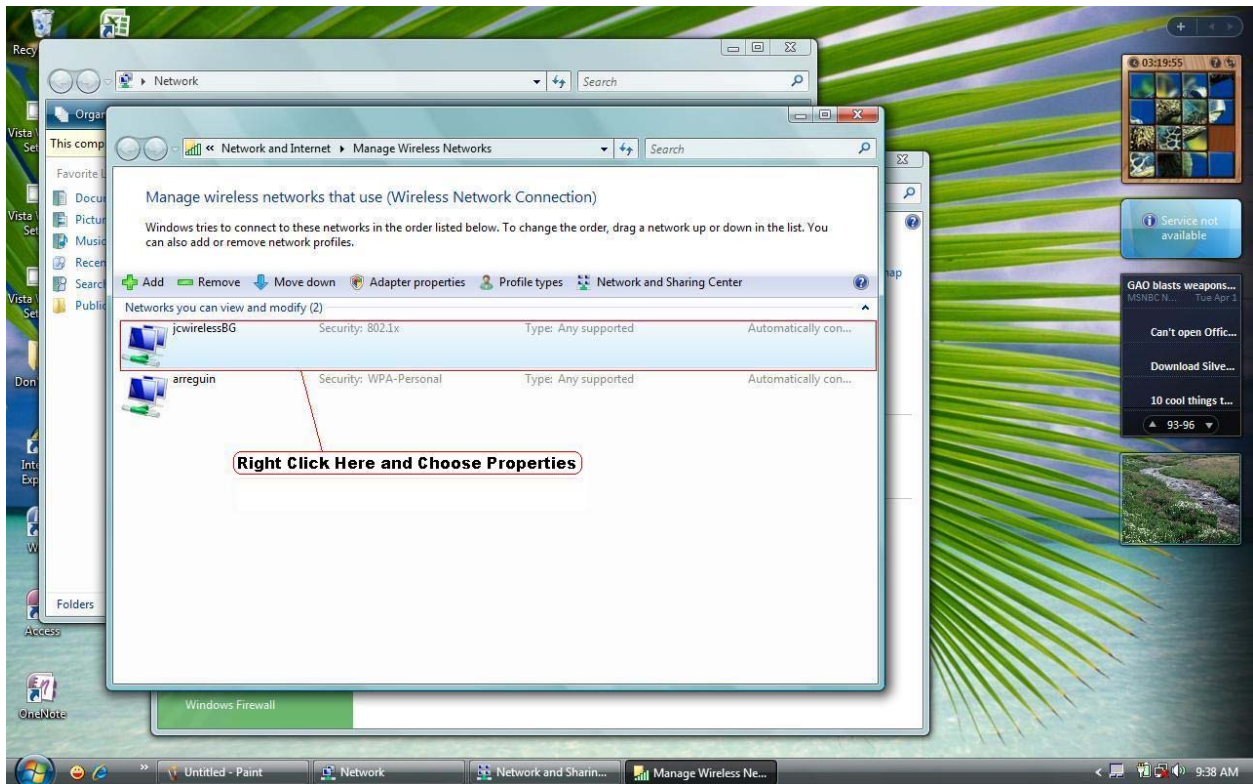
Step 6. On the next screen enter jcwirelessBG in the Network Name field. Make sure jcwireless is in lower case and BG is capitalized. In the Security type make sure 802.1x is chosen and in the Encryption type field says WEP. Also, make sure the box next to Start connection automatically is checked. Then click the Next button.



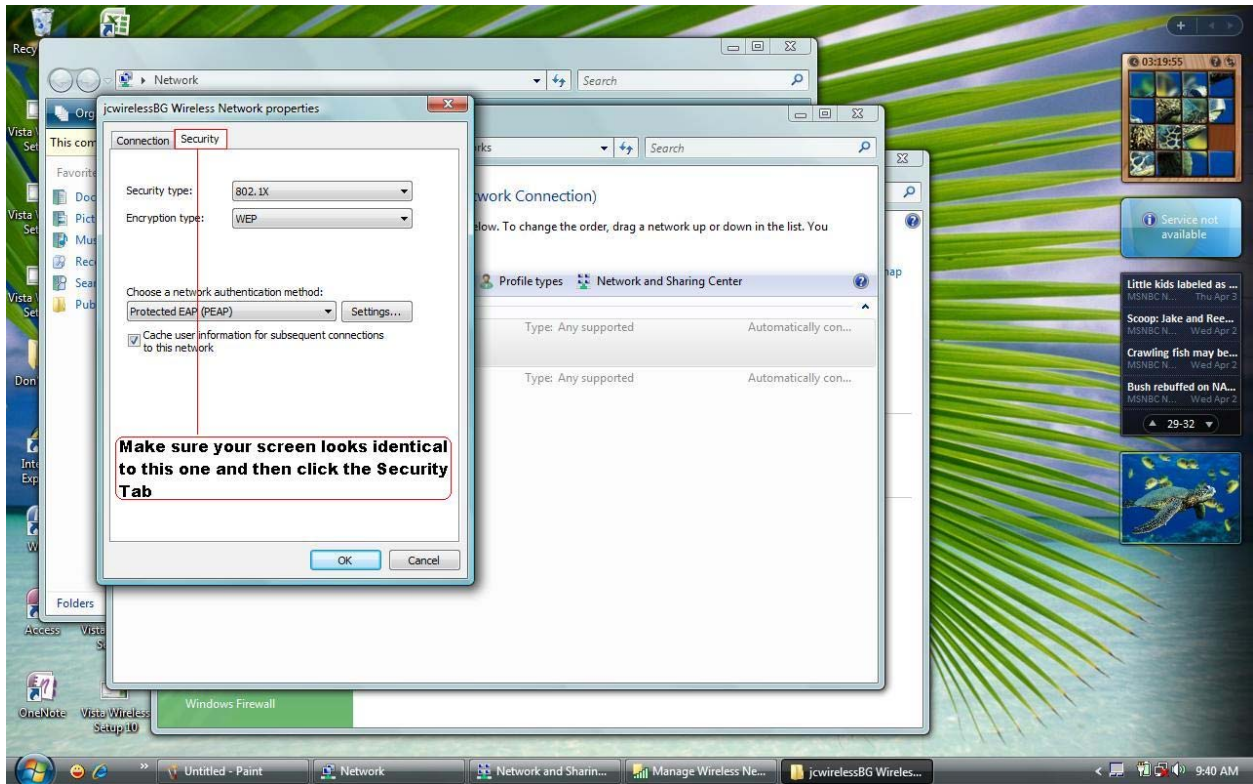
Step 7. Click the Connect button.



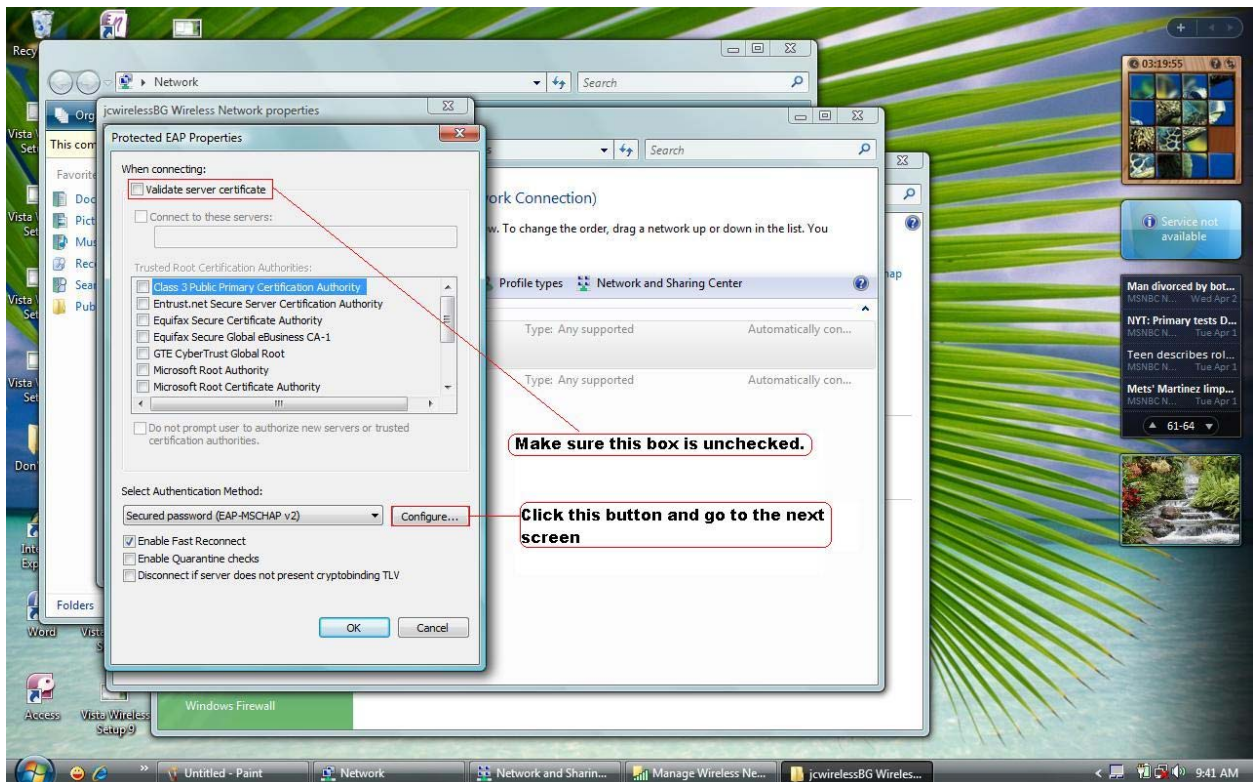
Step 8. Right click the jewirelessBG option and choose Properties.



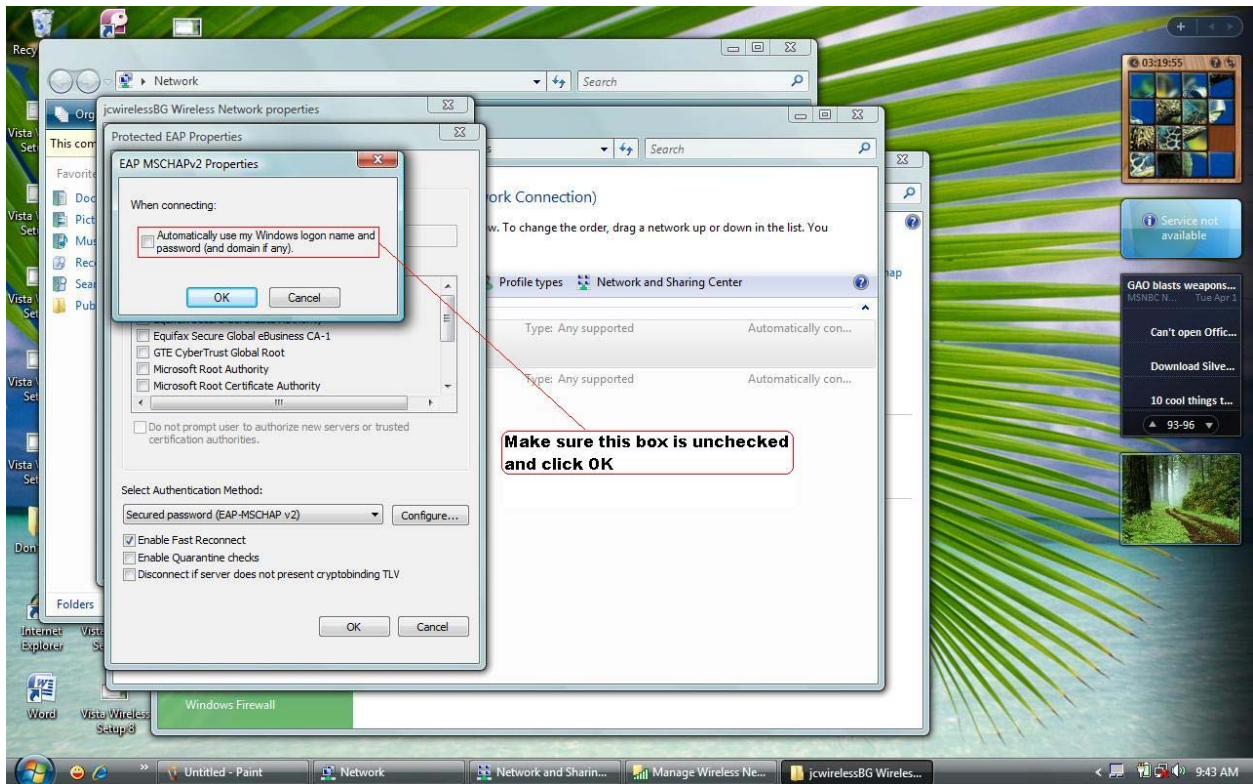
Step 9. Make sure your security type is 802.1X and Encryption type is WEP. Also, make sure the authentication method is Protected EAP(PEAP) and the box below is checked.



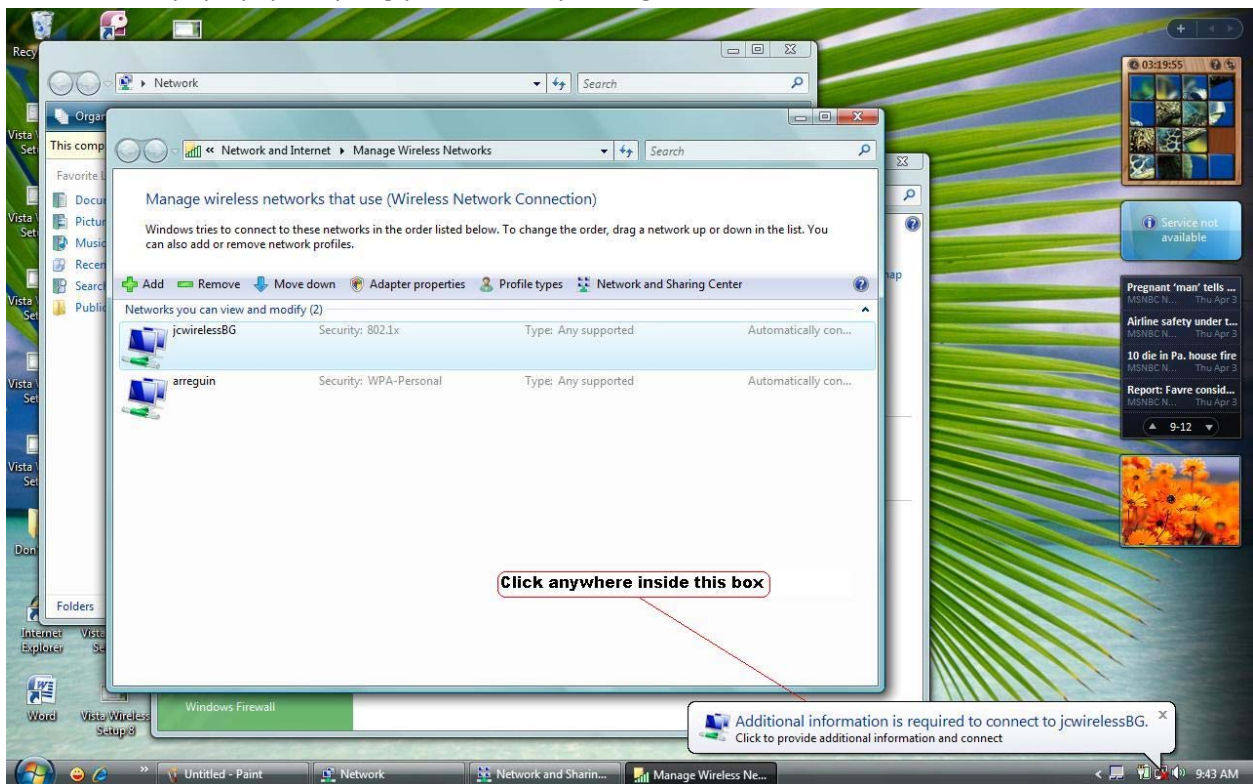
Step 10. Make sure the box next to Validate server certificate is unchecked. Also, make sure the box at the bottom left labeled Enable Fast Reconnect is checked and then click the Configure button.



Step 11. Make sure the box on this page is unchecked and click the OK button.



Step 12. You will see a box pop up like the one in the screen shot below. Click anywhere inside the box and a box will pop up, prompting you to enter your login information.



Step 13. Now, just enter your Judson email username and password and click the OK button. (You can leave the Logon domain field blank). Wait about 10-20 seconds and open your Internet browser (Internet Explorer or Firefox). If you are having any further issue please send an email to [techhelp@judsonu.edu](mailto:techhelp@judsonu.edu).

