



JUDSON UNIVERSITY

Information Technology Department

Scanning on a Konica Minolta Printer

1. Press "Public User Access" on the touch screen.

Job List

Enter the login user name and password and then touch [Login] or press the [Access] key.

Public User Access

User Name

Password

Login

User Name | Status

↑ ↓

Delete

Job Details

Y M C K

10/07/2008 17:17

Memory 100%

2. Press the "Direct Input" tab.

Job List

Select desired destination(s). No. of Dest. 000

Fax can be sent at any time using keypad.

Address Book Direct Input Job History Address Search Off-Hook

Receive I-Fax

Favorites ABC DEF GHI JKL MNO PQRS TUV WXYZ etc

IP Addr. ip01 E-Mail Tokyo User Box box01 Fax test1 WebDAV WebDAV01 1/ 1

I-Fax ifax1 E-Mail Osaka E-Mail Nagoya

Group Search

Scan Settings Original Settings Communication Settings

User Name | Status

↑ ↓

Delete

Job Details

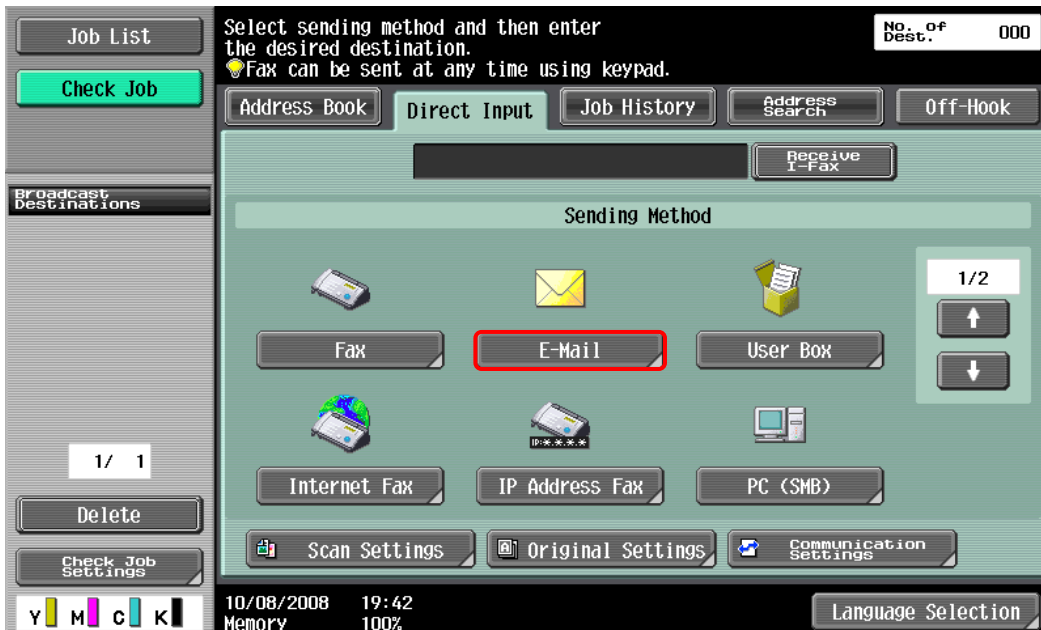
Y M C K

10/08/2008 19:41

Memory 100%

Language Selection

3. Press the “E-Mail” button.



4. Enter the Email Address.



5. Press the blue “Start” key. (Make sure the document is in the document feed or on the glass).