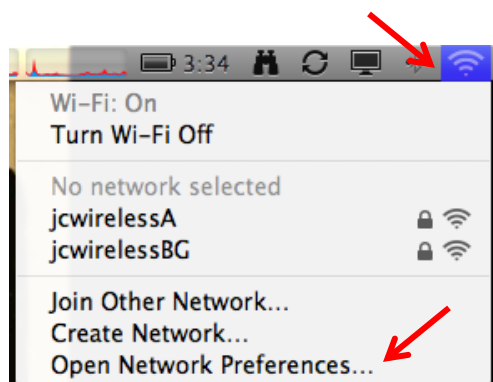




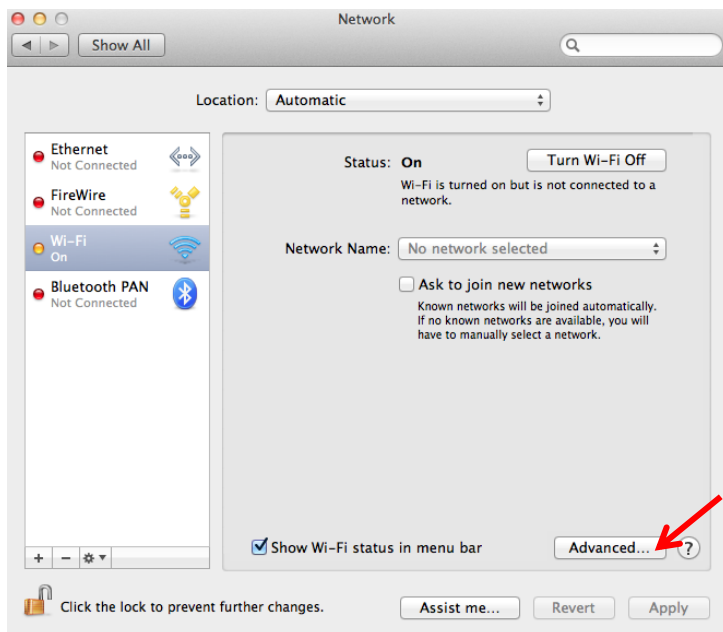
JUDSON UNIVERSITY

Information Technology Department

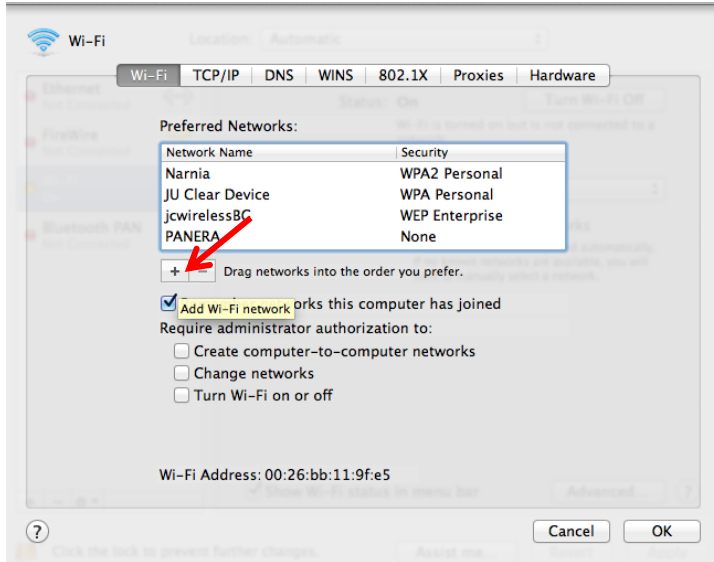
Connecting to Judson Wireless with Apple OS X Lion



1. Click the 'Wireless Connectivity' button in the upper right. From the list, select 'Open Network Preferences...'



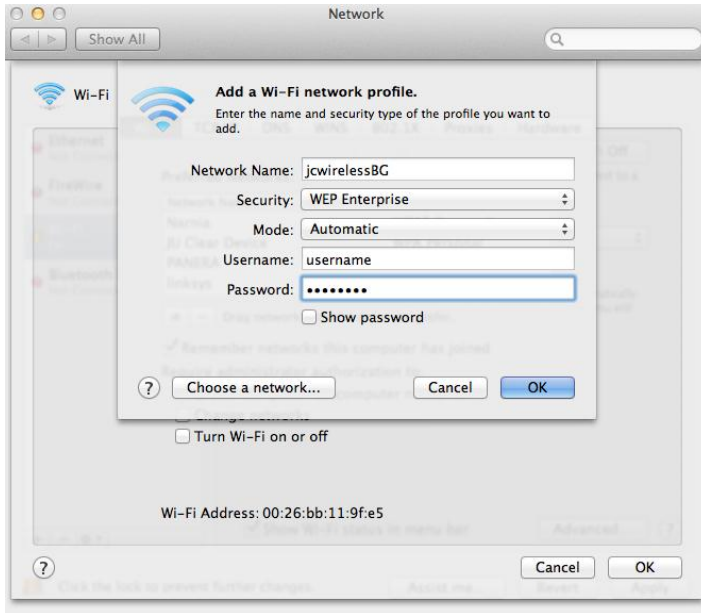
2. On the left, select 'Wi-Fi' and make sure it is On. Then, click the Advanced button.



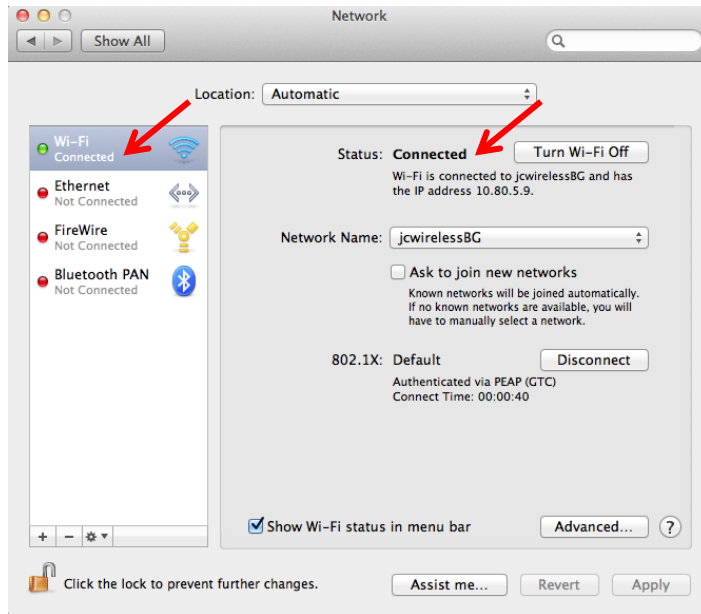
3. Click the “+” to add a new network.



4. For Network Name, enter *jcwirelessBG* (it is case sensitive) and select “WEP Enterprise” from the security drop-down menu.



5. Leave Mode as “Automatic”. Enter your Judson username and password, then click “OK”.



6. It should say “Connected” in the left menu, underneath “Wi-Fi” and after “Status:”

7. You can close the screen and open a web browser.