

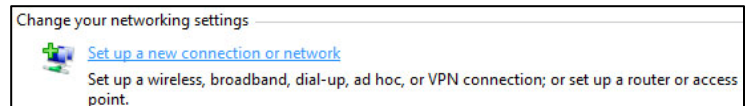


JUDSON UNIVERSITY

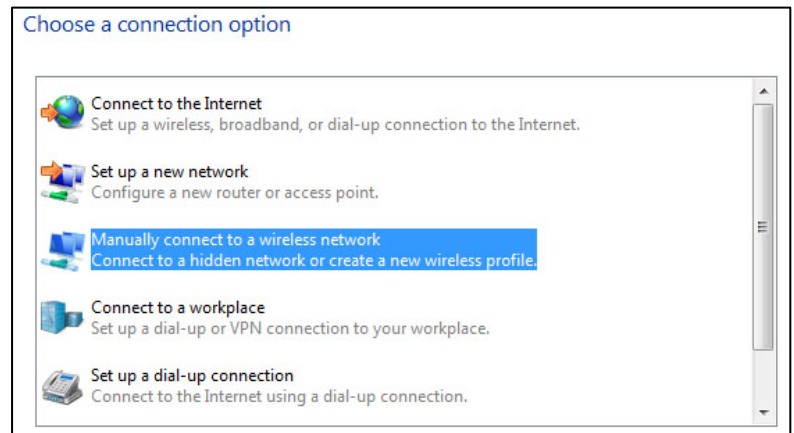
Information Technology Department

Setup for Connecting to the Judson Wireless with Windows 7

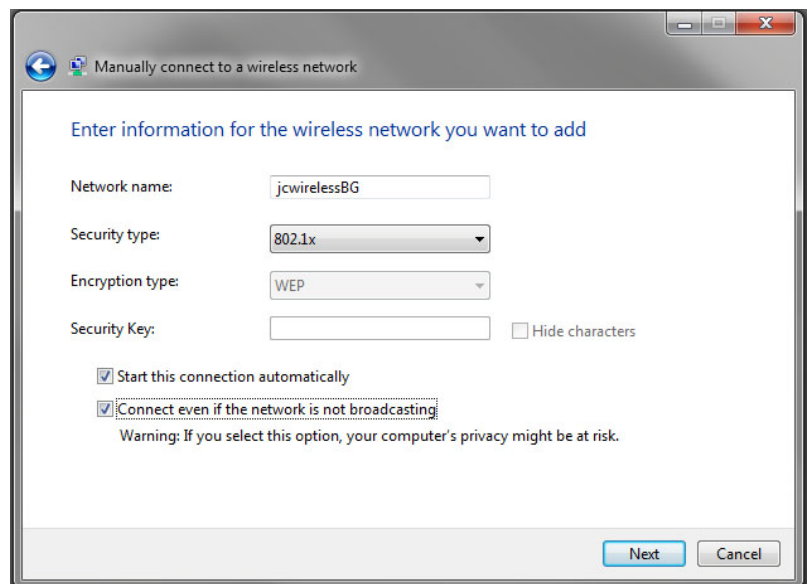
1. Open "Network and Sharing Center" by right-clicking the wireless icon in the taskbar.
2. Select "Set up a new connection or network."



3. Select "Manually connect to a wireless network" and click 'Next.'

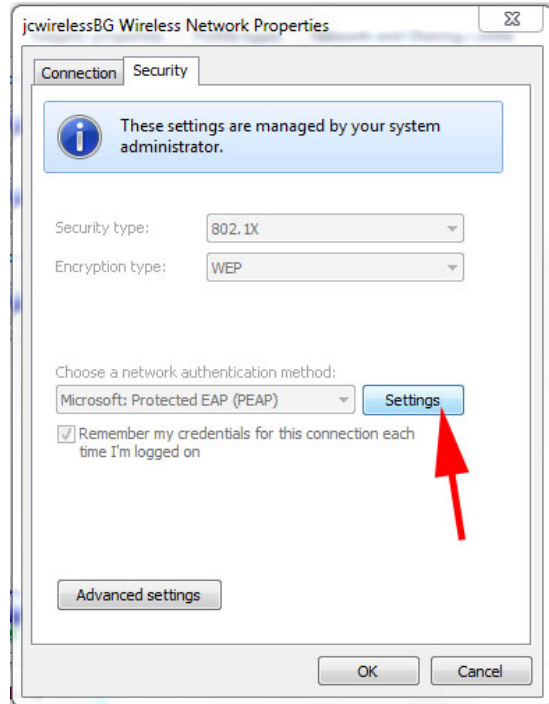


4. In the next window, enter options exactly as shown. This step is essential to get it working! When finished, click 'Next.'

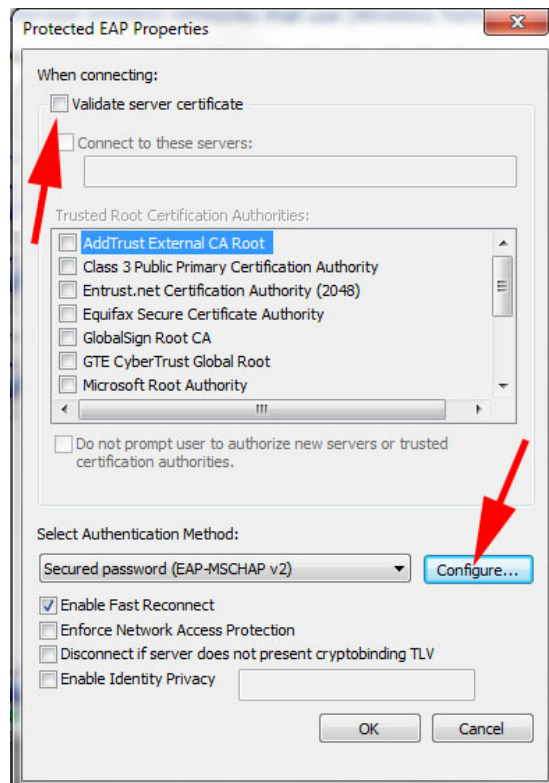


5. In the next window, click the “change settings” button.

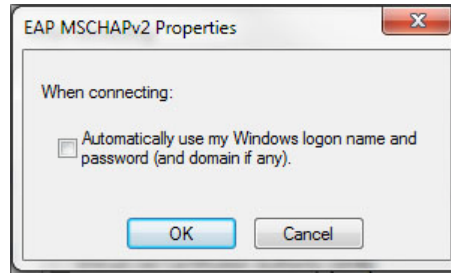
6. Click the ‘Security’ tab, then the ‘Settings’ button.



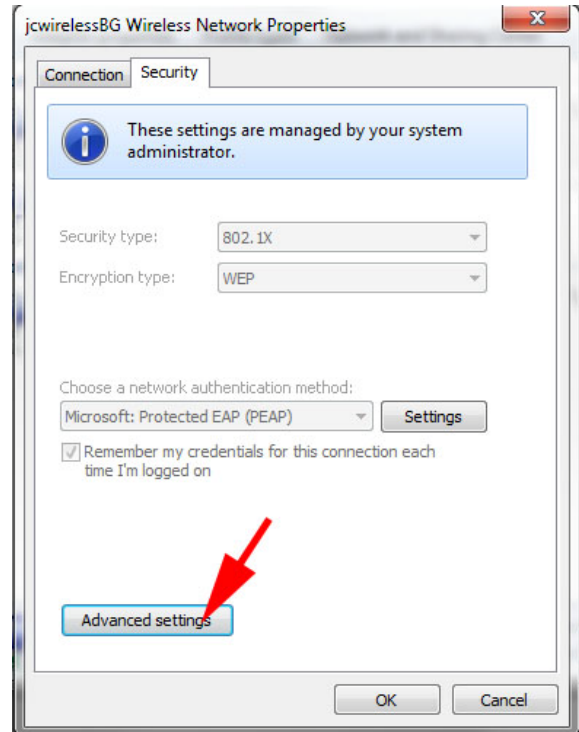
7. Uncheck “validate server certificate, then click the ‘Configure’ button.



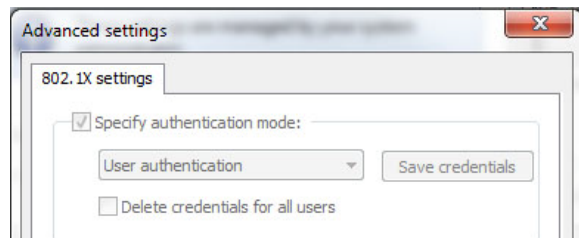
8. Uncheck the box in the next dialog window.
9. Click ok, then ok again.



10. Click “advanced settings” button at the bottom of the window.



11. Check the “Specify authentication mode” button.
12. Select “User authentication,” then click “save credentials” and enter your Judson University username and password. When finished, click ‘ok’ three times to exit out.



13. Open your browser and login to Websense if necessary.