



JUDSON UNIVERSITY

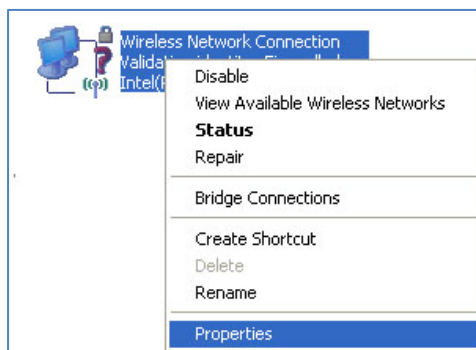
Information Technology Department

Setup for Connecting to the Judson Wireless with Windows XP

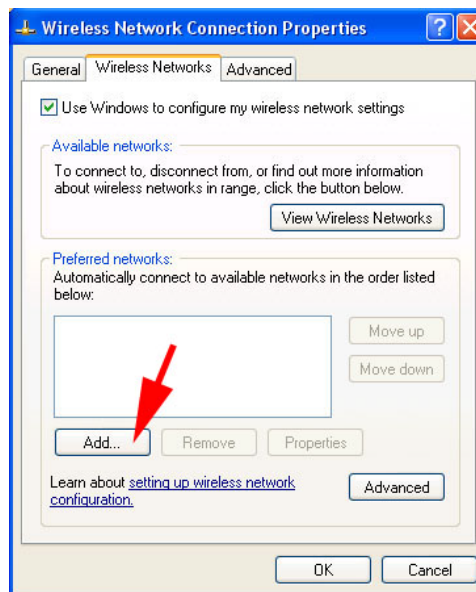
1. Press the “Start” button and select “Connect To” then “Show all connections.”



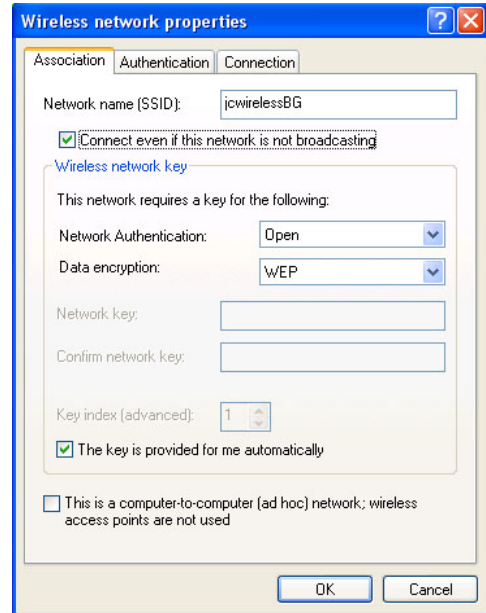
2. In the next window, right-click the “Wireless Network Connection” icon and select “Properties” from the pop-up menu.



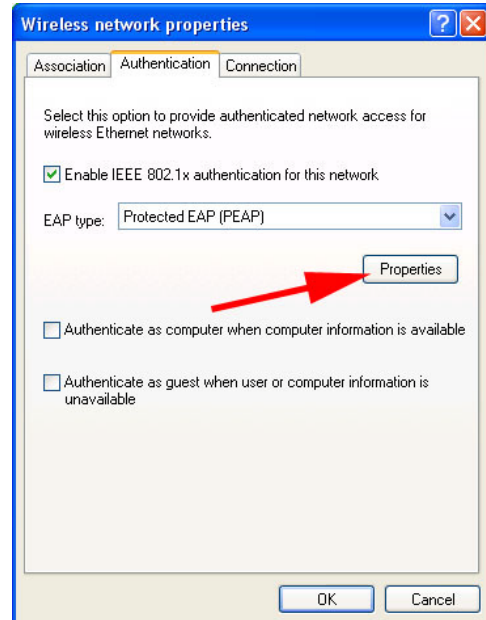
3. In the next window, select the “Wireless Networks” tab at the top, then click the “Add” button.



- In the “Network name: (SSID)” type jcwirelessBG and make the rest of the options match what’s shown.



- Next, select the “Authentication” tab, and match options as shown. When finished, press the “Properties” button.



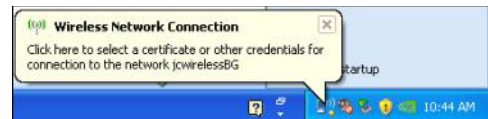
- In the “Protected EAP Properties” window, uncheck the “Validate server certificate” box, check the “Enable Fast Reconnect,” then press “Configure.”



- Uncheck the box in the next window.



- When your wireless configuration prompts you to enter more information, click the pop-up window.



- Enter your Judson username and login. If it does not accept your login, enter *jc-d1* in the “Logon domain” field.

- You’re finished! Open your browser and login to Websense if prompted.

